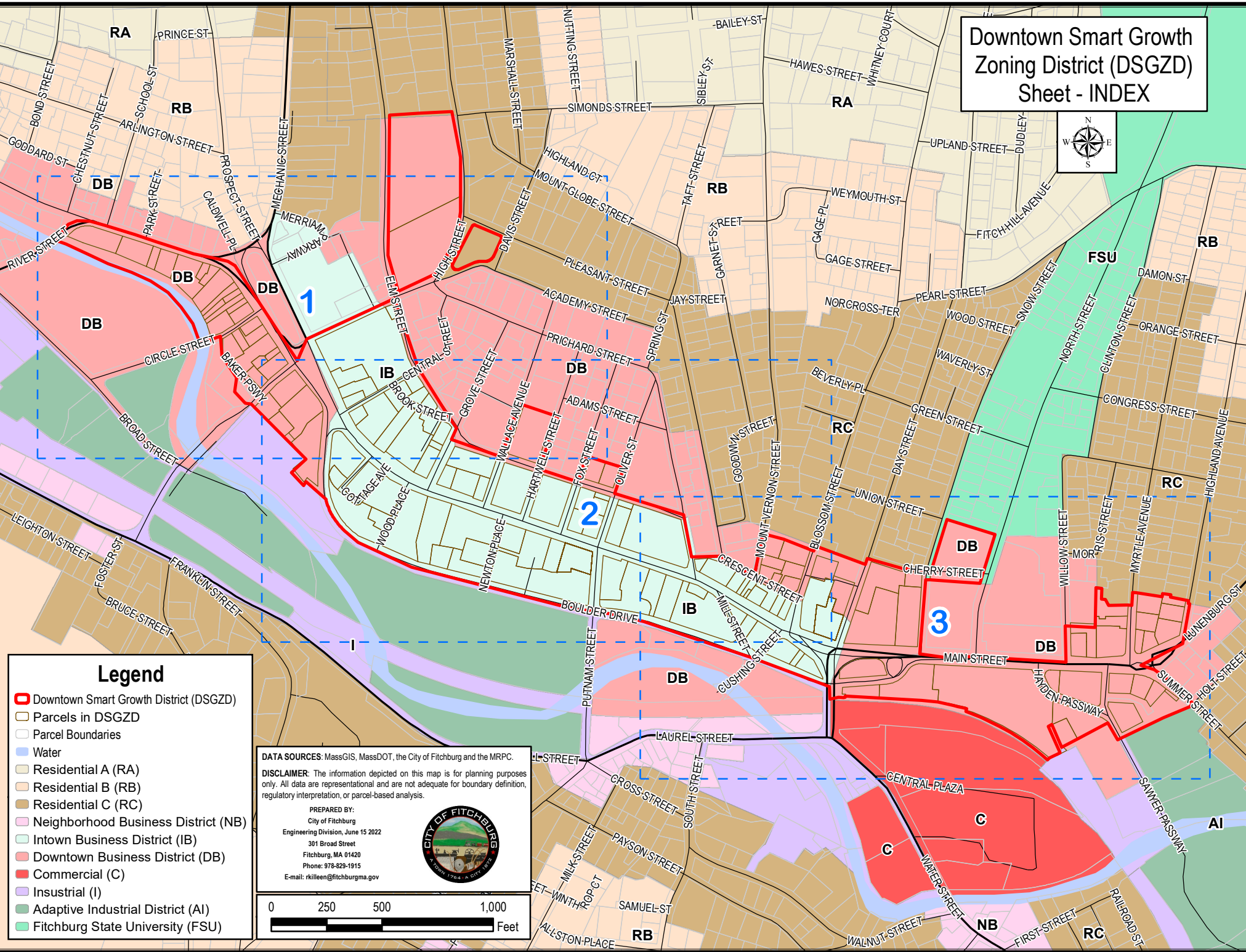
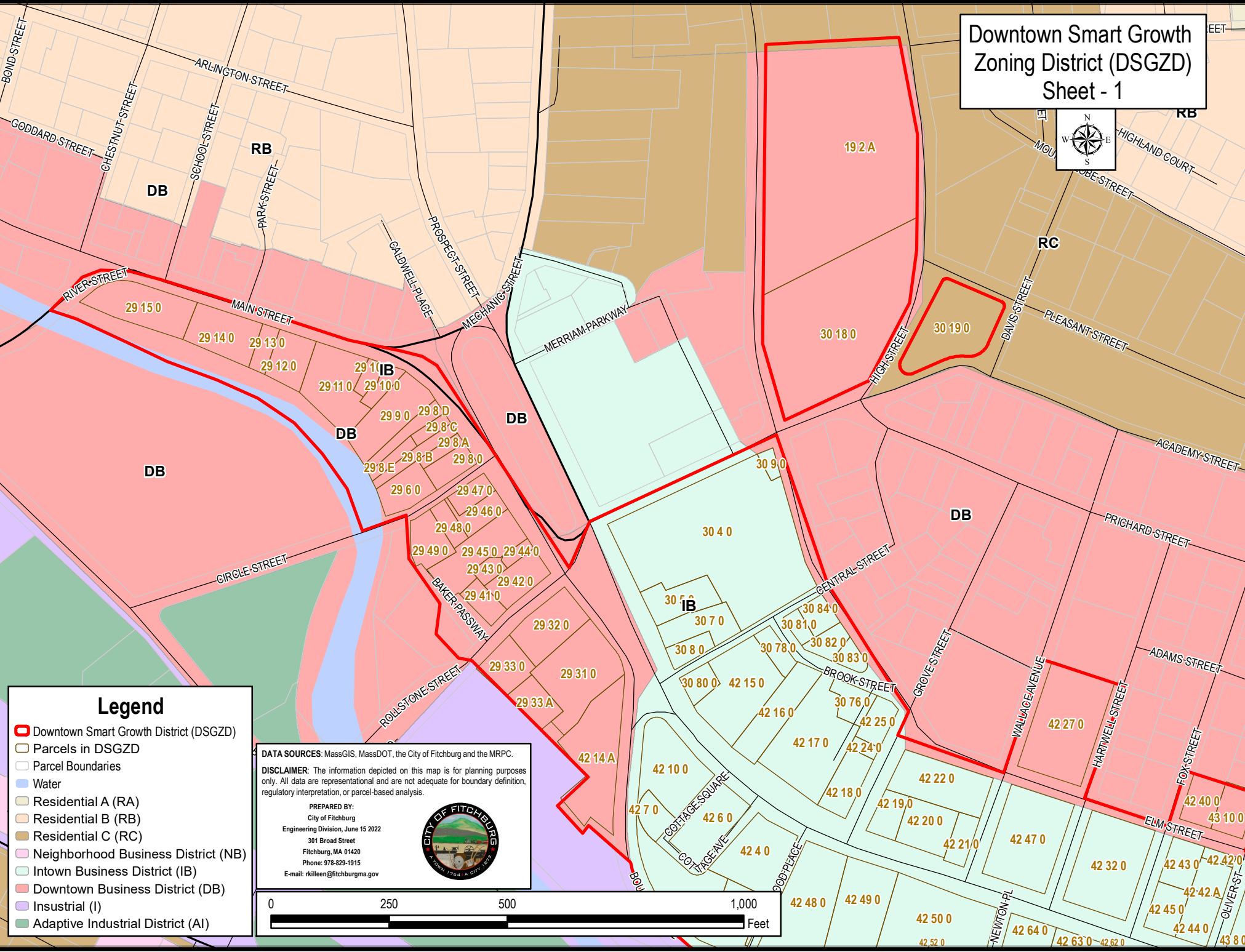


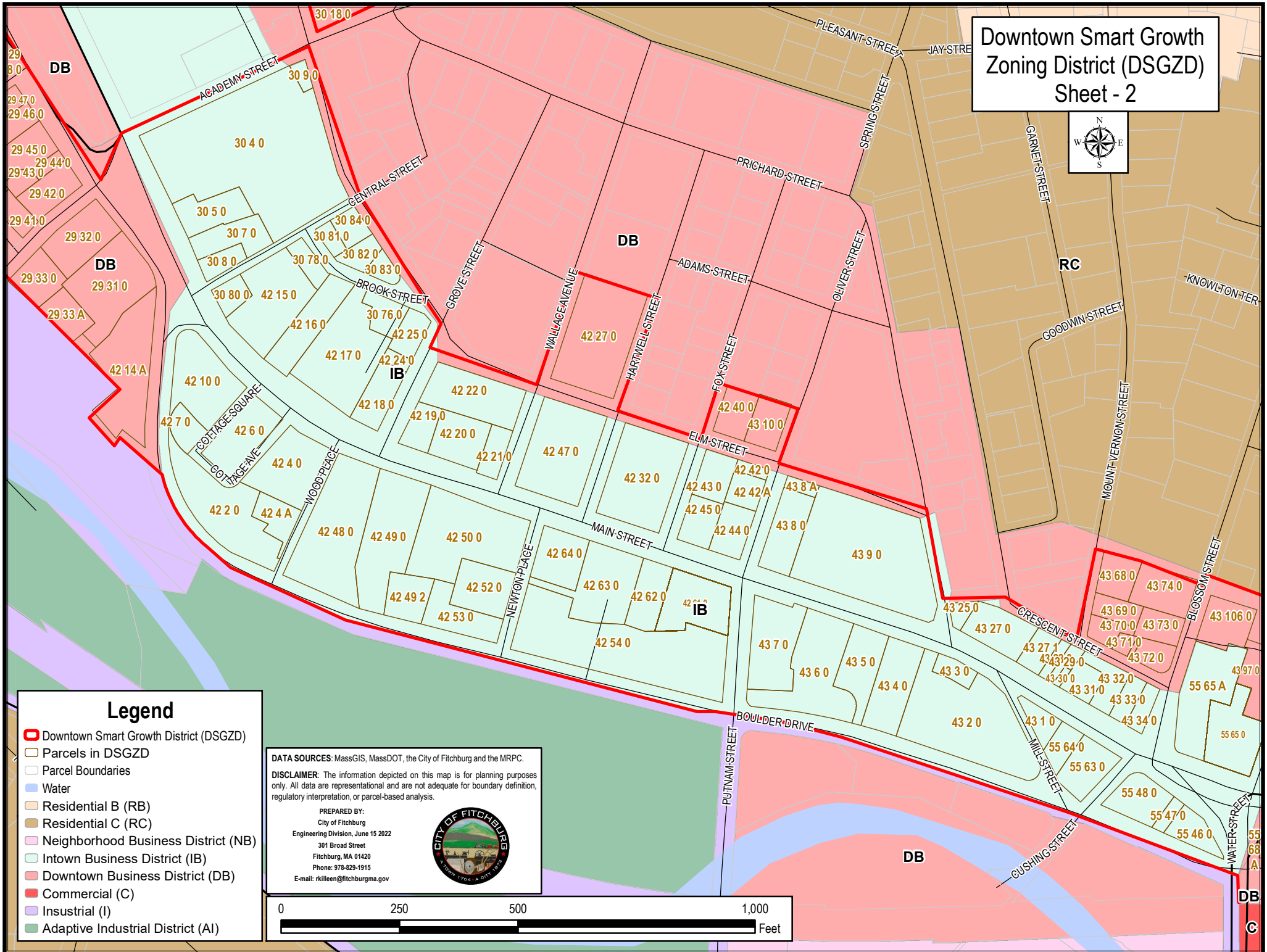
Downtown Smart Growth Zoning District (DSGZD) Sheet - INDEX



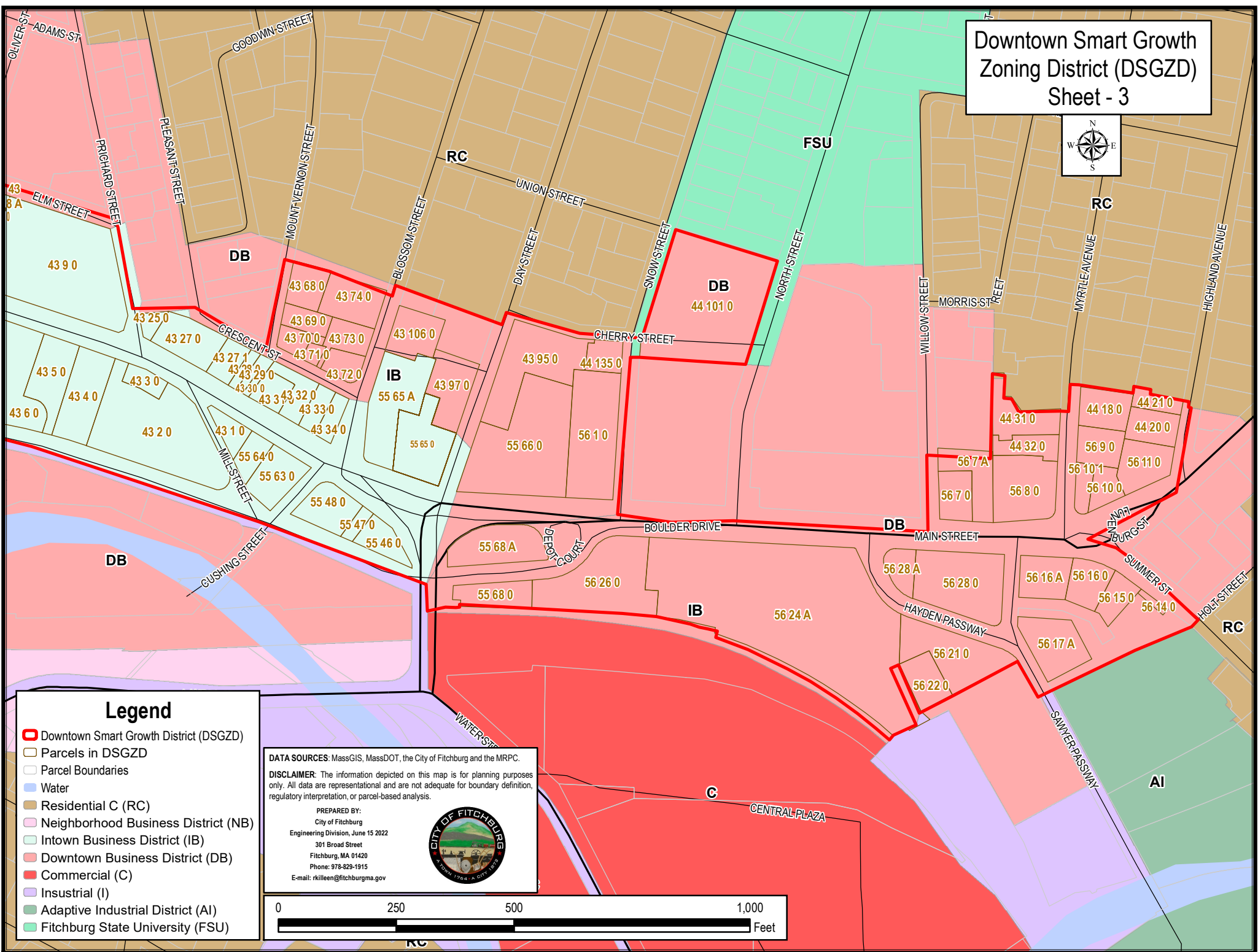
Downtown Smart Growth Zoning District (DSGZD) Sheet - 1



Downtown Smart Growth Zoning District (DSGZD) Sheet - 2



Downtown Smart Growth Zoning District (DSGZD) Sheet - 3



Legend

- Downtown Smart Growth District (DSGZD)
- Parcels in DSGZD
- Parcel Boundaries
- Water
- Residential C (RC)
- Neighborhood Business District (NB)
- Intown Business District (IB)
- Downtown Business District (DB)
- Commercial (C)
- Industrial (I)
- Adaptive Industrial District (AI)
- Fitchburg State University (FSU)

DATA SOURCES: MassGIS, MassDOT, the City of Fitchburg and the MRPC.

DISCLAIMER: The information depicted on this map is for planning purposes only. All data are representational and are not adequate for boundary definition, regulatory interpretation, or parcel-based analysis.

PREPARED BY:
City of Fitchburg
Engineering Division, June 15 2022
301 Broad Street
Fitchburg, MA 01420
Phone: 978-829-1915
E-mail: rkilleen@fitchburgma.gov

